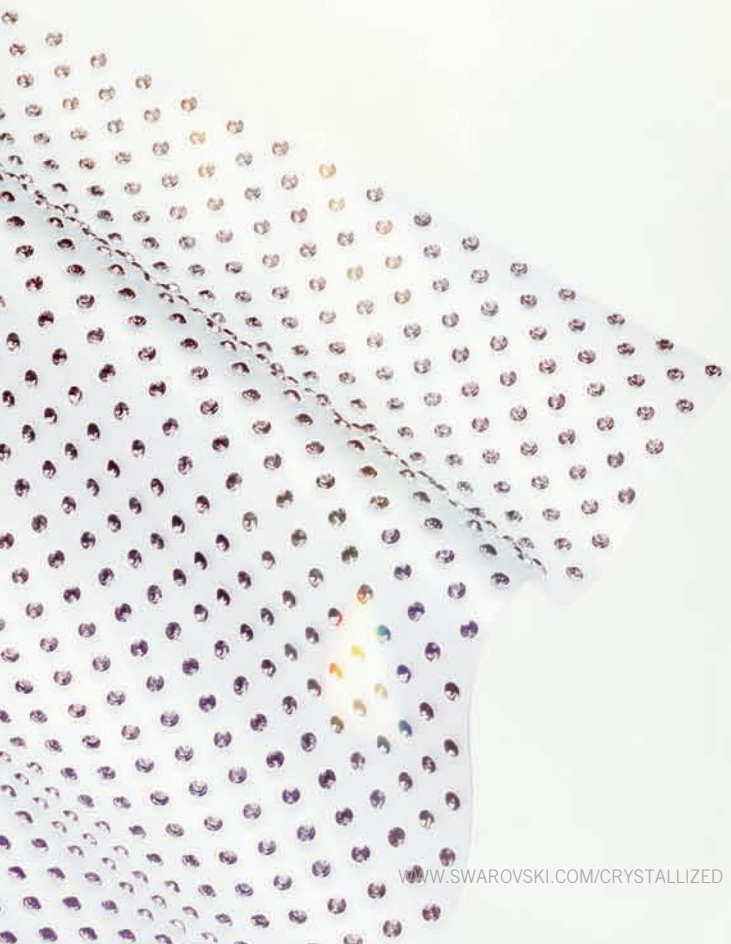




## 13 CRYSTAL GLAZE & *crystaltex*

The very sophisticated character of Crystal Glaze makes it a modern and extremely malleable product that is suitable for a multitude of uses. It comes in a transparent or black carrier material with the wide colour range of XILION Chatons. Crystal Glaze can be sewn, glued or mechanically applied and it can easily be combined with other crystal elements.

Available in a variety of carrier materials with a wide colour range of XILION Roses, Crystaltex is the perfect choice for creating a full spectrum of designs for all segments. This product, available per row and metre, is offered in both a Hotfix and No Hotfix version and can also be sewn or glued. As Crystaltex-it, it comes with a ready-to-apply pressure sensitive adhesive to decorate paper and solid surfaces. Represented in this product group are standard motives as well as bandings motives that incorporate up to eight different colours. Customers can create their own bandings motives and customise their designs.



Article Explanation - Sheets

<<<

58 000



SH	100
S	~496x192
M	1 SH 100%

58 000	SH	S	M	100%
Article number	Sheet	Sheet size in mm	Minimum order quantity in sheets (SH)	Documentation size in %

Ordering Example & Product Variety Explanation

<<<

58 000	100	012	001
Article number	Sheet	Colour of silicone	Colour of crystals
58000 (~3,000 crystals/sheet) 58200 (~1,000 crystals/sheet)	100 Standard sheet ~496x192 mm	010 Transparent 012 Black	Please see the respective product matrix for all available code references.

Article Explanation - Rows

<<<

58 200



R	002-024	
M	1-12 PCS	100%

58 200	R	M	100%
Article number	Number of rows	Minimum order quantity in pieces (PCS) depending on the number of ordered rows.	Documentation size in %

Ordering Example & Product Variety Explanation

<<<

58 200	003	010	001
Article number	3-digit code for number of rows	Colour of silicone	Colour of crystals
	002-048 (for art. 58000) 002-024 (for art. 58200)	010 Transparent 012 Black	Please see the respective product matrix for all available code references.



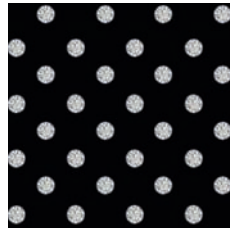
**Available Silicone Colours & Stone Configurations** \_\_\_\_\_ <<<

Crystal Glaze is available in two different stone configurations and two silicone colours. Please see the respective product matrix for all available options and combination possibilities.

Article 58000 with ~ 3,000 crystals per sheet



010  
Transparent

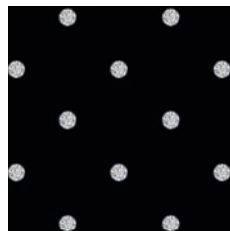


012  
Black

Article 58200 with ~ 1,000 crystals per sheet



010  
Transparent



012  
Black

58 000

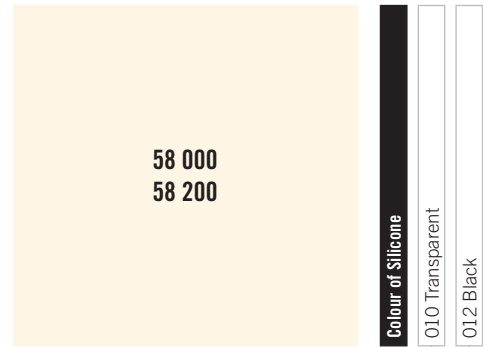


SH/R	100/002-048 rows	
M	1 SH (by sheet)	
	1-24 PCS (by rows)	100%

58 200



SH/R	100/002-024 rows	
M	1 SH (by sheet)	
	1-12 PCS (by rows)	100%

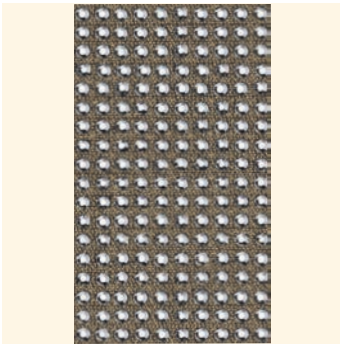


Colour	010 Transparent	012 Black
Crystal F (001)	<input type="checkbox"/>	<input type="checkbox"/>
Crystal AB F (001 AB)	<input type="checkbox"/>	<input type="checkbox"/>
Crystal Golden Shadow F (001 GSHA)	<input type="checkbox"/>	<input type="checkbox"/>
Crystal Silver Shade F (001 SSHA)	<input type="checkbox"/>	<input type="checkbox"/>
Jet (280)	<input type="checkbox"/>	<input type="checkbox"/>
Amethyst F (204)	<input type="checkbox"/>	<input type="checkbox"/>
Aquamarine F (202)	<input type="checkbox"/>	<input type="checkbox"/>
Black Diamond F (215)	<input type="checkbox"/>	<input type="checkbox"/>
Fuchsia F (502)	<input type="checkbox"/>	<input type="checkbox"/>
Light Colorado Topaz F (246)	<input type="checkbox"/>	<input type="checkbox"/>
Light Rose F (223)	<input type="checkbox"/>	<input type="checkbox"/>
Light Siam F (227)	<input type="checkbox"/>	<input type="checkbox"/>
Peridot F (214)	<input type="checkbox"/>	<input type="checkbox"/>
Sapphire F (206)	<input type="checkbox"/>	<input type="checkbox"/>
Silk F (391)	<input type="checkbox"/>	<input type="checkbox"/>
Smoked Topaz F (220)	<input type="checkbox"/>	<input type="checkbox"/>
Topaz F (203)	<input type="checkbox"/>	<input type="checkbox"/>
Light Multi F (908)	<input type="checkbox"/>	<input type="checkbox"/>
Rainbow Multi F (909)	<input type="checkbox"/>	<input type="checkbox"/>

Article Explanation

<<<

62 000



<b>R</b>	001-057
<b>SS</b>	SS 6 (2028)
<b>M</b>	10 M <span style="float: right;">100%</span>

62 000	R	SS	M	100%
Article number	This article is available in 1-57 rows.	Stone size	Minimum order quantity in metres (M)	Documentation size in %

Ordering Example & Product Variety Explanation

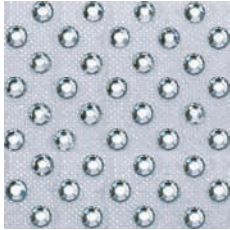
<<<

62 000	010	F080	001	NOHF
Article number	3-digit code for number of rows	Type and colour of base material  F Fabric S Synthetic  010 Transparent 012 Black 080 Antique Gold 081 Gold 082 Silver 083 Antique Silver	Colour of crystals  Please see the respective product matrix for all available code references.	Hotfix Technology  HF With Hotfix glue NOHF Without Hotfix glue

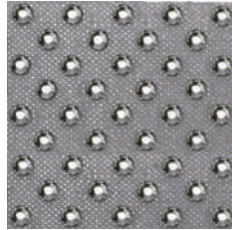
Available Base Material & Stone Configurations

<<<

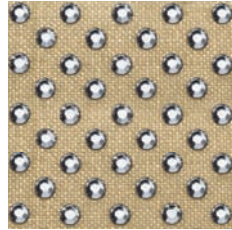
Crystaltex Bandings are available in six different base materials. Please see the respective product matrix for all available options.



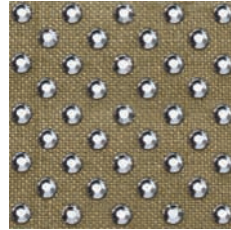
F082 Fabric Silver



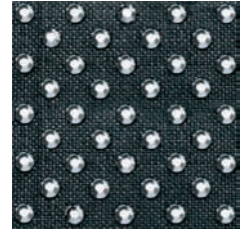
F083 Fabric Antique Silver



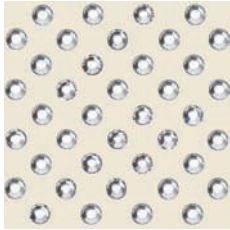
F081 Fabric Gold



F080 Fabric Antique Gold

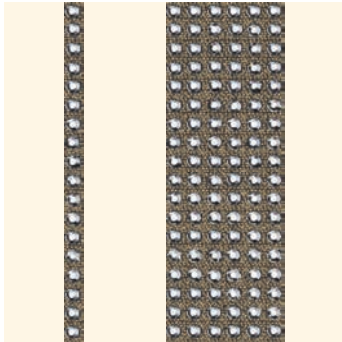


F012 Fabric Black



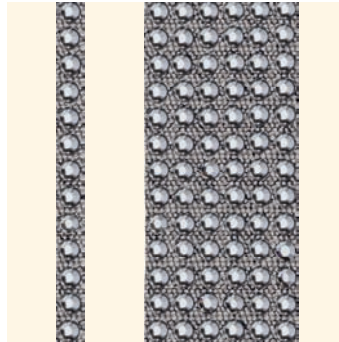
S010 Synthetic Transparent

62 000



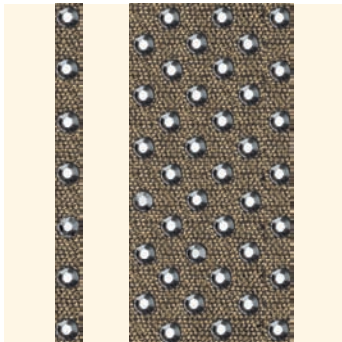
R	001-057
SS	SS 6 (2028)
M	10 M
	100%

62 010



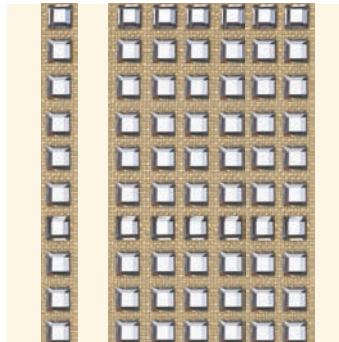
R	001-044
SS	SS 10 (2028)
M	10 M
	100%

62 011



R	001-044
SS	SS 10 (2028)
M	10 M
	100%

62 020



R	001-033
SS	3 mm (2400)
M	10 M
	100%



	Stone Size			Base Material					
	SS 6	SS 10	3 mm	F012 Fabric Black	F080 Fabric Antique Gold	F081 Fabric Gold	F082 Fabric Silver	F083 Fabric Antique Silver	S010 Synthetic Transparent*
<b>62 000*</b>									
<b>62 010*</b>									
<b>62 011*</b>									
<b>62 020*</b>									
Colour									
Crystal F (001)	■	■	■	■	■	■	■	■	■
Crystal AB F (001 AB)	■	■	■	■	■	■	■	■	■
Crystal Dorado F (001 DOR)	■	■							■
Crystal Golden Shadow F (001 GSHA)	■	■		■	■	■	■	■	■
Crystal Silver Shade F (001 SSHA)	■	■		■	■	■	■	■	■
Jet (280)	■	■	■	■	■	■	■	■	■
Jet Hematite (280 HEM)	■	■	■	■	■	■	■	■	■
Amethyst F (204)	■	■							■
Aquamarine F (202)	■	■							■
Black Diamond F (215)	■	■							■
Emerald F (205)	■	■							■
Fuchsia F (502)	■	■							■
Light Rose F (223)	■	■							■
Light Siam F (227)	■	■							■
Light Topaz F (226)	■	■							■
Peridot F (214)	■	■							■
Sapphire F (206)	■	■							■
Silk F (391)	■	■							■
Smoked Topaz F (220)	■	■							■
Sun F (248)	■	■							■

Crystal Glaze & Crystaltex

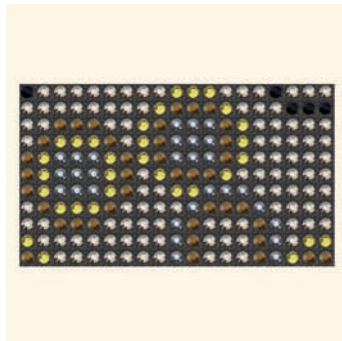
\* All Crystaltex articles are available as Hotfix or No Hotfix version, except version S010 Synthetic Transparent (only Hotfix).

Article Explanation

<<<

66 013

02





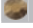

















<b>C</b>	F080-001SSHA/001DOR/226/280HEM/280
<b>E</b>	S6CT/S6CT/S6CT/S6CT/S6CT
<b>S</b>	~49x29
<b>M</b>	4.948 M (100 PCS) <span style="float: right;">84%</span>

66 013	C	E	S	M	84%
Article Number	Colour assortment	Elements	Motif size in mm	Minimum Order Quantity in metres (M); pieces (PCS)	Documentation size in %
	Colour of base material (F080) is separated from crystal colours with a hyphen. Colour code 1 (001 SSHA) corresponds with element 1; colour code 2 (001 DOR) corresponds with element 2 etc.	Crystaltex Bandings Motives are available in stone sizes SS 6 and SS 10 in close stone setting.		Over- or under-supply of +/- 10% is possible and has to be accepted.	

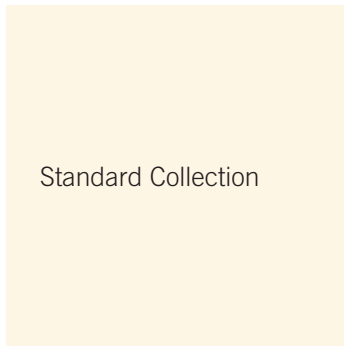
Ordering Example & Product Variety Explanation

<<<

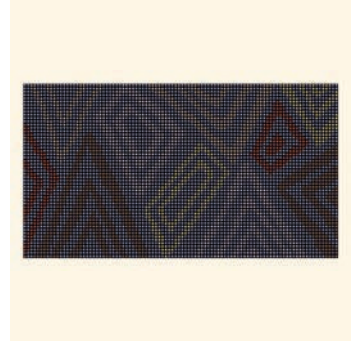
66 013	F080	001 SSHA	001 DOR	226
Article Number	Type and colour of base material	Crystal colour corresponding to element 1; colour of most frequently used element in the motif	Crystal colour corresponding to element 2; colour of second most frequently used element in the motif	Crystal colour corresponding to element 3; colour of third most frequently used element in the motif
	F Fabric S Synthetic  010 Transparent 012 Black 080 Antique Gold 081 Gold 082 Silver 083 Antique Silver	Please see the respective product matrix for all available code references.		
>>> 280 HEM	280	NOHF		
Crystal colour corresponding to element 4; colour of fourth most frequently used element in the motif	Crystal colour corresponding to element 5; colour of fifth most frequently used element in the motif	Hotfix Technology HF Hotfix NOHF No Hotfix		

		Stone Size		Base Material					
		SS 6	SS 10	F012 Fabric Black	F080 Fabric Antique Gold	F081 Fabric Gold	F082 Fabric Silver	F083 Fabric Antique Silver	S010 Synthetic Transparent
66 000 to 66 019									
Colour									
 Crystal F (001)		■	■	■	■	■	■	■	■
 Crystal AB F (001 AB)		■	■	■	■	■	■	■	■
 Crystal Dorado F (001 DOR)		■	■	■	■	■	■	■	■
 Crystal Golden Shadow F (001 GSHA)		■	■	■	■	■	■	■	■
 Crystal Silver Shade F (001 SSHA)		■	■	■	■	■	■	■	■
 Jet (280)		■	■	■	■	■	■	■	■
 Jet Hematite (280 HEM)		■	■	■	■	■	■	■	■
 Amethyst F (204)		■	■	■	■	■	■	■	■
 Aquamarine F (202)		■	■	■	■	■	■	■	■
 Black Diamond F (215)		■	■	■	■	■	■	■	■
 Emerald F (205)		■	■	■	■	■	■	■	■
 Fuchsia F (502)		■	■	■	■	■	■	■	■
 Light Rose F (223)		■	■	■	■	■	■	■	■
 Light Siam F (227)		■	■	■	■	■	■	■	■
 Light Topaz F (226)		■	■	■	■	■	■	■	■
 Peridot F (214)		■	■	■	■	■	■	■	■
 Sapphire F (206)		■	■	■	■	■	■	■	■
 Silk F (391)		■	■	■	■	■	■	■	■
 Smoked Topaz F (220)		■	■	■	■	■	■	■	■
 Sun F (248)		■	■	■	■	■	■	■	■

Crystal Glaze & Crystaltex



66 000 02



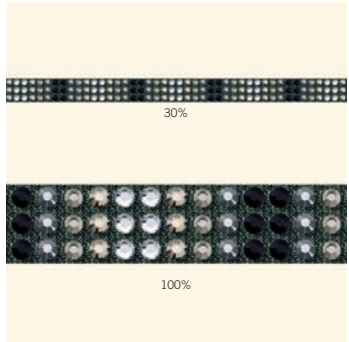
<b>C</b>	F012-280HEM/001DOR/001SSHA/001GSHA/226/220
<b>E</b>	S6CT/S6CT/S6CT/S6CT/S6CT
<b>S</b>	~250x138
<b>M</b>	5.000 M (20 PCS) 17%

66 001 02



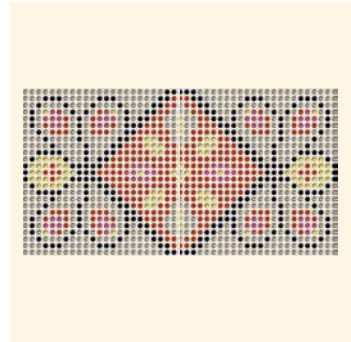
<b>C</b>	F080-280HEM/280/001SSHA/226/220/227/248
<b>E</b>	S6CT/S6CT/S6CT/S6CT/S6CT/S6CT
<b>S</b>	~250x55
<b>M</b>	5.000 M (20 PCS) 17%

66 003 02



<b>C</b>	F083-001/001SSHA/215/280HEM/280
<b>E</b>	S10CT/S10CT/S10CT/S10CT/S10CT
<b>S</b>	~477x10
<b>M</b>	4.773 M (10 PCS)

66 006 02



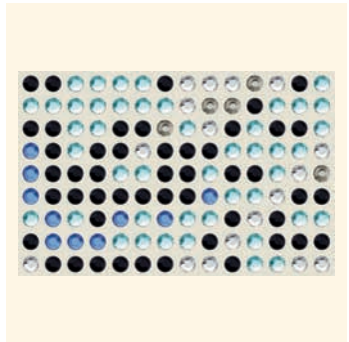
<b>C</b>	S010-215/227/280/226/502
<b>E</b>	S6CT/S6CT/S6CT/S6CT/S6CT
<b>S</b>	~122x65
<b>M</b>	4.896 M (40 PCS) 34%

66 008 02



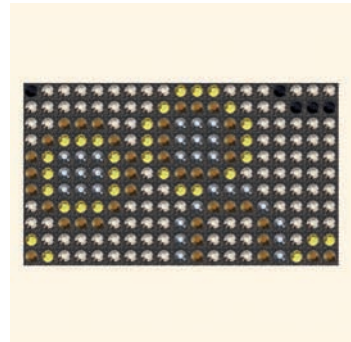
<b>C</b>	F083-215/280/206
<b>E</b>	S6CT/S6CT/S6CT
<b>S</b>	~250x23
<b>M</b>	5.000 M (20 PCS)

66 010 02



<b>C</b>	S010-280/202/001/206/215
<b>E</b>	S6CT/S6CT/S6CT/S6CT/S6CT
<b>S</b>	~36x23
<b>M</b>	4.739 M (130 PCS) 114%

66 013 02



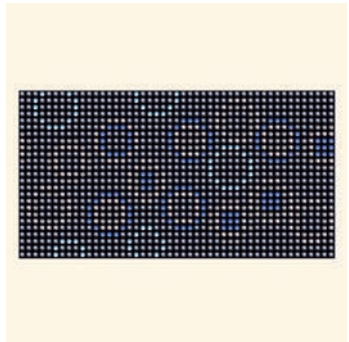
<b>C</b>	F080-001SSHA/001DOR/226/280HEM/280
<b>E</b>	S6CT/S6CT/S6CT/S6CT/S6CT
<b>S</b>	~49x29
<b>M</b>	4.948 M (100 PCS) 84%

66 014 02

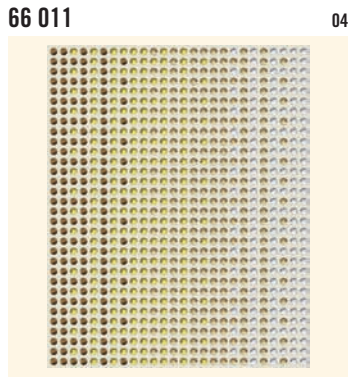


<b>C</b>	F083-001/001SSHA/215/280HEM/280
<b>E</b>	S10CT/S10CT/S10CT/S10CT/S10CT
<b>S</b>	~68x10
<b>M</b>	4.773 M (70 PCS) 62%

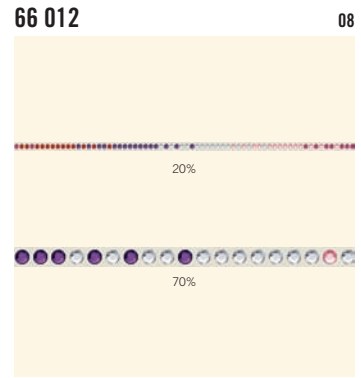
66 019 02



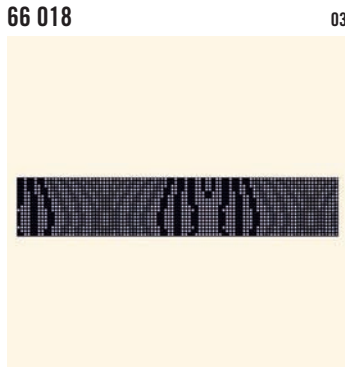
<b>C</b>	F012-280HEM/001SSHA/215/206/202
<b>E</b>	S6CT/S6CT/S6CT/S6CT/S6CT
<b>S</b>	~122x65
<b>M</b>	4.896 M (40 PCS) 34%



<b>C</b>	S010-001GSHA/226/001/001DOR
<b>E</b>	S6CT/S6CT/S6CT/S6CT
<b>S</b>	~68x83
<b>M</b>	4.739 M (70 PCS) 51%



<b>C</b>	F082-204/223/502/227/001
<b>E</b>	S10CT/S10CT/S10CT/S10CT/S10CT
<b>S</b>	~505x3
<b>M</b>	4.036 M (8 PCS)



<b>C</b>	F012-001AB/001/280HEM/280/215
<b>E</b>	S6CT/S6CT/S6CT/S6CT/S6CT
<b>S</b>	~245x44
<b>M</b>	4.896 M (20 PCS) 17%

The MOQ for Standard Motives is 1 packing unit (approx. 5 metres). Samples can be ordered below 1 packing unit. If the Standard Motives are modified (colour changes) please refer to the detailed MOQ information at the end of this chapter. This product must be ordered in metres.

Article Explanation

<<<

65 000



<b>SS</b>	SS6
<b>S</b>	-20x12
<b>M</b>	100 PCS
	<b>100%</b>

<b>65 000</b>	<b>SS</b>	<b>S</b>	<b>M</b>	<b>100%</b>
Article number	Stone size	Size of the Crystaltex Motif in mm	Minimum order quantity in pieces (PCS)	Documentation size in %

Ordering Example & Product Variety Explanation

<<<

<b>65 000</b>	<b>F012</b>	<b>001</b>
Article number	Type and colour of base material	Colour of crystals
	F Fabric	Please see the respective product matrix for all available code references.
	012 Black 080 Antique Gold 081 Gold 082 Silver 083 Antique Silver	



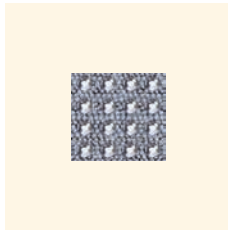
Available Base Material Colours

<<<

Crystaltex Motives are available in five different base material colours. Please see the respective product matrix for all available options.



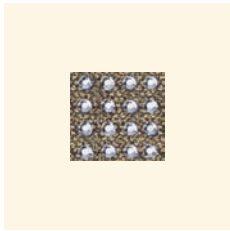
F082 Fabric Silver



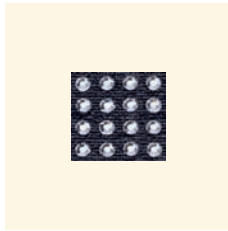
F083 Fabric Antique Silver



F081 Fabric Gold



F080 Fabric Antique Gold

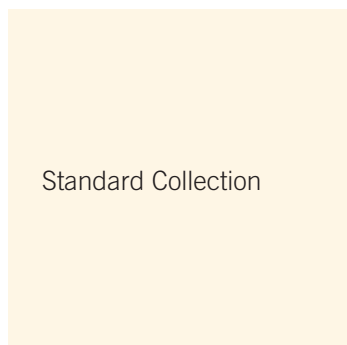


F012 Fabric Black

65 000  
to  
65 027

Base Material
F012 Fabric Black
F080 Fabric Antique Gold
F081 Fabric Gold
F082 Fabric Silver
F083 Fabric Antique Silver

Colour	F012 Fabric Black	F080 Fabric Antique Gold	F081 Fabric Gold	F082 Fabric Silver	F083 Fabric Antique Silver
Crystal F (001)	■	■	■	■	■
Crystal AB F (001 AB)	■	■	■	■	■
Crystal Golden Shadow F (001 GSHA)	■	■	■	■	■
Crystal Silver Shade F (001 SSHA)	■	■	■	■	■
Jet (280)	■	■	■	■	■
Jet Hematite (280 HEM)	■	■	■	■	■

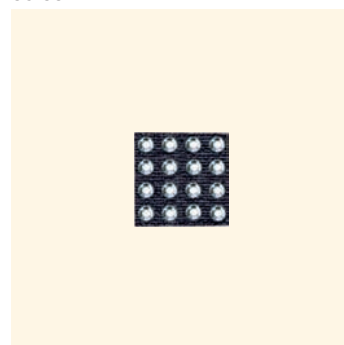


65 000



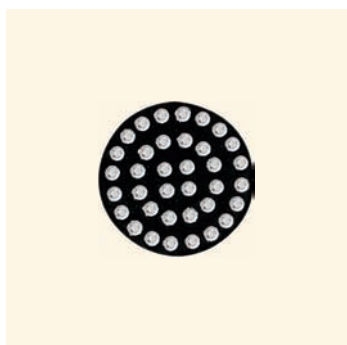
SS	SS 6
S	~20x12
M	100 PCS
	100%

65 001



SS	SS 6
S	~12x12
M	100 PCS
	100%

65 002



SS	SS 6
S	~ Ø 20
M	100 PCS
	100%

65 003



SS	SS 6
S	~ Ø 12
M	100 PCS
	100%

65 004



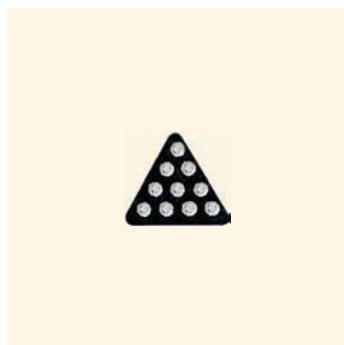
SS	SS 6
S	~24x12
M	100 PCS
	100%

65 005



SS	SS 6
S	~19x14
M	100 PCS
	100%

65 006



SS	SS 6
S	~14x12
M	100 PCS
	100%

65 007



SS	SS 6
S	~18x13
M	100 PCS
	100%

65 008



SS	SS 6
S	~33x8
M	100 PCS
	100%

65 009



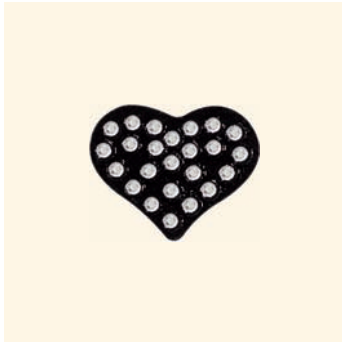
SS	SS 6
S	~33x8
M	100 PCS
	100%

65 011



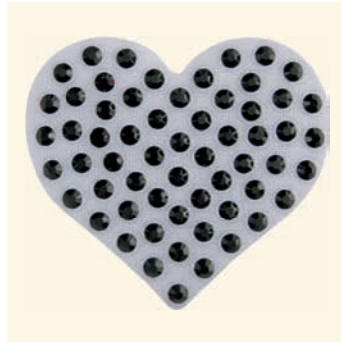
SS	SS 6
S	~ Ø 17
M	100 PCS
	100%

65 013



SS	SS 6
S	~22x18
M	100 PCS
	<b>100%</b>

65 015



SS	SS 10
S	~43x39
M	100 PCS
	<b>90%</b>

65 016



SS	SS 10
S	~Ø 47
M	100 PCS
	<b>90%</b>

65 017



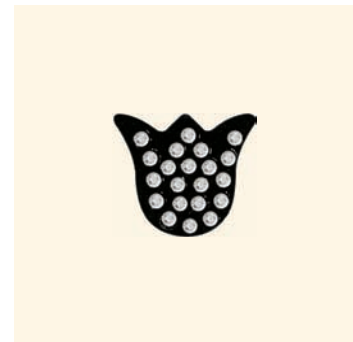
SS	SS 6
S	~18x11
M	100 PCS
	<b>100%</b>

65 018



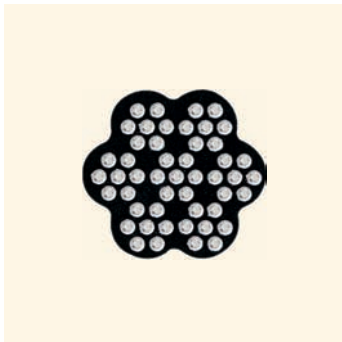
SS	SS 6
S	~18x11
M	100 PCS
	<b>100%</b>

65 019



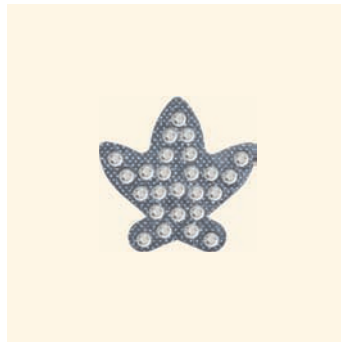
SS	SS 6
S	~19x16
M	100 PCS
	<b>100%</b>

65 023



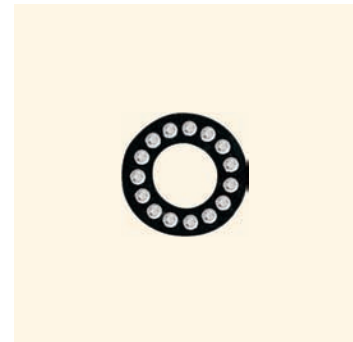
SS	SS 6
S	~Ø 24
M	100 PCS
	<b>100%</b>

65 025



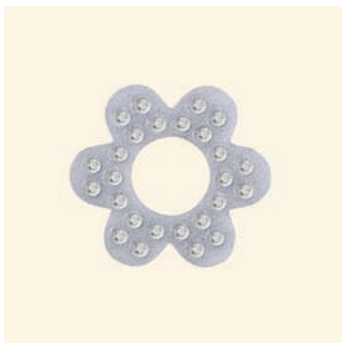
SS	SS 6
S	~21x20
M	100 PCS
	<b>100%</b>

65 026



SS	SS 6
S	~Ø 16
M	100 PCS
	<b>100%</b>

65 027



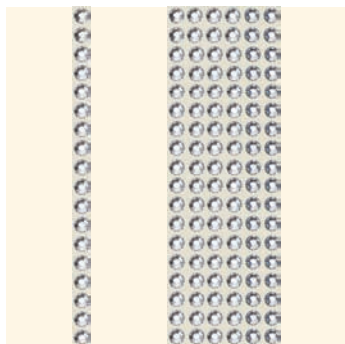
SS	SS 6
S	~Ø 26
M	100 PCS
	<b>100%</b>

**Article Explanation**

<<<

Crystaltex-it Bandings are Crystaltex Bandings with transparent base material and with a ready-to-use adhesive.

**62 000**



<b>R</b>	001-057
<b>SS</b>	SS 6 (2028)
<b>M</b>	10 M <span style="float: right;">100%</span>

<b>62 000</b>	<b>R</b>	<b>SS</b>	<b>M</b>	<b>100%</b>
Article number	This article is available in 1-57 rows.	Stone size	Minimum Order Quantity in metres (M)	Documentation size in %

**Ordering Example & Product Variety Explanation**

<<<

<b>62 000</b>	<b>006</b>	<b>I010</b>	<b>001</b>
Article number	3-digit code for number of rows	Type and colour of base material  I It version  010 Transparent	Colour of crystals  Please see the respective product matrix for all available code references.



<p><b>62 000</b> <b>62 010</b> <b>62 011</b></p>	<b>Stone Size</b>	SS 6	SS 10	<b>Base Material</b>	IO10 It Transparent
--	-------------------	------	-------	----------------------	---------------------

Colour	Stone Size	SS 6	SS 10	Base Material
Crystal F (001)	■	■	■	■
Crystal AB F (001 AB)	■	■	■	■
Crystal Dorado F (001 DOR)	■	■	■	■
Crystal Golden Shadow F (001 GSHA)	■	■	■	■
Crystal Silver Shade F (001 SSHA)	■	■	■	■
Jet (280)	■	■	■	■
Jet Hematite (280 HEM)	■	■	■	■
Amethyst F (204)	■	■	■	■
Aquamarine F (202)	■	■	■	■
Black Diamond F (215)	■	■	■	■
Emerald F (205)	■	■	■	■
Fuchsia F (502)	■	■	■	■
Light Rose F (223)	■	■	■	■
Light Siam F (227)	■	■	■	■
Light Topaz F (226)	■	■	■	■
Peridot F (214)	■	■	■	■
Sapphire F (206)	■	■	■	■
Silk F (391)	■	■	■	■
Smoked Topaz F (220)	■	■	■	■
Sun F (248)	■	■	■	■

Crystal Glaze & Crystaltex

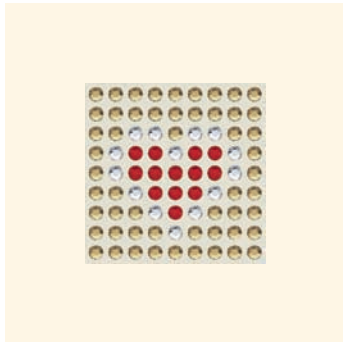
Article Explanation

<<<

Crystaltex-it Bandings Motives are Crystaltex Bandings Motives with transparent base material and with a ready-to-use adhesive.

66 017

03



<b>C</b>	I010-001GSHA/001/227
<b>E</b>	S6CT/S6CT/S6CT
<b>S</b>	-23x23
<b>M</b>	4.922 M (210 PCS)   100%

66 017	C	E	S	M	100%
Article number	Colour assortment	Elements	Motif size in mm	Minimum Order Quantity in metres (M); pieces (PCS)	Documentation size in %
	Colour of base material (I010) is separated from crystal colours with a hyphen. Colour code 1 (001 GSHA) corresponds with element 1; colour code 2 (001) corresponds with element 2 etc.	Crystaltex-it Bandings Motives are available in stone sizes SS 6 and SS 10 in close stone setting.		Over- or under-supply of +/- 10% is possible and has to be accepted.	

Ordering Example & Product Variety Explanation

<<<

66 017	I010	001 GSHA	001	227
Article number	Type and colour of base material	Crystal colour corresponding to element 1; colour of most frequently used element in the motif	Crystal colour corresponding to element 2; colour of second most frequently used element in the motif	Crystal colour corresponding to element 3; colour of third most frequently used element in the motif
	I It version 010 Transparent	Please see the respective product matrix for all available code references.		

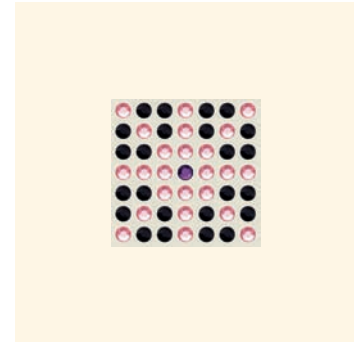
Trend Collection  
Spring/Summer 2009

66 015 03



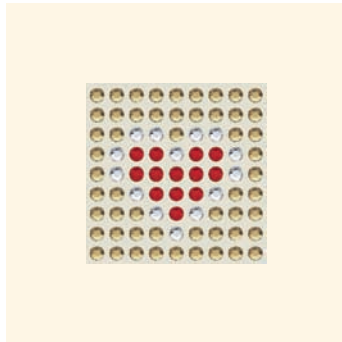
<b>C</b>	I010-280/204/227/001GSHA/223/001
<b>E</b>	S6CT/S6CT/S6CT/S6CT/S6CT/S6CT
<b>S</b>	~73x16
<b>M</b>	4.375 M (60 PCS) 58%

66 016 03



<b>C</b>	I010-280/223/204
<b>E</b>	S6CT/S6CT/S6CT
<b>S</b>	~18x18
<b>M</b>	4.922 M (270 PCS) 105%

66 017 03



<b>C</b>	I010-001GSHA/001/227
<b>E</b>	S6CT/S6CT/S6CT
<b>S</b>	~23x23
<b>M</b>	4.922 M (210 PCS) 100%

Product Details

<<<

Article Number	Standard Motives (as shown)				Modified Standard Motives (change of colour)			
	Packing Unit = MOQ		MOQ for Samples		MOQ		MOQ for Samples	
	in metres	in pieces	in metres	in pieces	in metres	in pieces	in metres	in pieces
66000	5.000	20	0.250	1	5.000	20	0.250	1
66001	5.000	20	0.250	1	5.000	20	0.500	2
66003	4.773	10	0.477	1	33.408	70	6.682	14
66006	4.896	40	0.122	1	4.896	40	0.490	4
66008	5.000	20	0.250	1	14.999	60	1.500	6
66010	4.739	130	0.036	1	14.218	390	1.312	36
66011	4.739	70	0.068	1	4.739	70	0.203	3
66012	4.036	8	0.505	1	88.798	176	22.199	44
66013	4.948	100	0.049	1	9.895	200	0.990	20
66014	4.773	70	0.068	1	33.408	490	2.864	42
66015	4.375	60	0.073	1	17.499	240	1.750	24
66016	4.922	270	0.018	1	19.686	1,080	1.896	104
66017	4.922	210	0.023	1	14.765	630	1.406	60
66018	4.896	20	0.245	1	4.896	20	0.490	2
66019	4.896	40	0.122	1	4.896	40	0.490	4

The MOQ for Standard Motives is 1 packing unit (approx. 5 metres). Samples can be ordered below 1 packing unit. If the Standard Motives are modified (colour changes) please refer to the detailed MOQ information in the table above. This product must be ordered in metres.

A special motif is any individual design created by the customer, which is different from the Crystaltex or Crystaltex-it Bandings Motives Standard or Trend Collections. This service opens up many customisation possibilities and enables you to profit from Swarovski's longtime experience and design expertise. A range of customisation options for existing motives is available (see "Customisation Possibilities" below). You may also submit sketches of a design that will suit your special needs – such as a brand image or an image to suit a particular sales campaign. This will then be made up according to your specifications using Computer Aided Design, which allows for easy adjustments according to your needs. All Standard Crystaltex Bandings Motives are also available as „It-version“ and vice versa.

## Customisation Possibilities

&lt;&lt;&lt;

Motives come in rows and per metre

Pattern repeats:

- min. size 1x2 rows
- max. size 50 cm x maximum rows (44 or 57)
- Up to eight colours are possible for Crystaltex and Crystaltex-it Bandings Motives using either SS 6 or SS 10 stones (mix of stone sizes is not possible).

## Ordering Process

&lt;&lt;&lt;

Send the request with a drawing you wish to order to your nearest Swarovski sales office. Make sure you include all measurements to the desired motif. Please also indicate which product group your special motif refers to (Crystaltex, Crystaltex-it). You will then receive a quotation including your article number, minimum order quantity (MOQ), price, and the line drawing of your special motif in PDF format. Please contact your Swarovski sales office again if any changes need to be made. Your special motif will be produced and delivered following your confirmation.

## Please Note

&lt;&lt;&lt;

Please always submit your drawing of the desired motif to represent it in the actual size you require. A small sketch, when enlarged to the desired size, will have blurred lines that will make it difficult to correctly reinterpret. Pictures or drawings representing 100% size of the design or very good quality scans in JPG, BMP or DXF format will ensure that we have clear data to work with. These can also be sent via email or on a CD-ROM. If sending a sewing pattern, please include the whole pattern and not just cut outs. When the sketch is submitted as a hard copy by fax or e-mail, please include a scale legend (e.g. copy/scan with ruler next to the drawing). This will ensure that the desired size of the motif can be identified.

Special productions are generally offered to all our customers if feasibility is given and our General Terms and Conditions are applied. Please note that the simple order of a design does not grant exclusive production of this design to the customer.

Bandings may be delivered cut up to 3 pieces per packaging.

In case that the size of the motif is smaller than 50 cm the packing unit might be below 5 metres.

Over- or undersupply of +/- 10% is possible and has to be accepted.